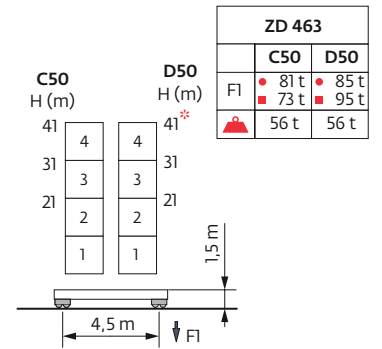
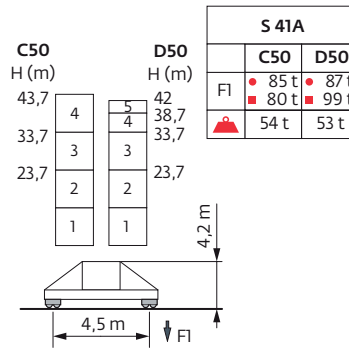
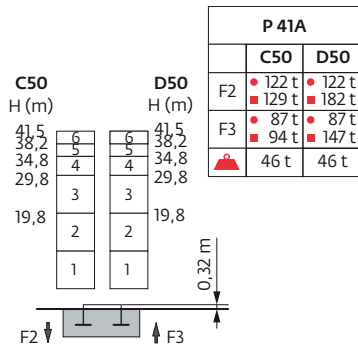
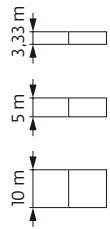




Mât - Réactions / Mast - Reaktionskräfte / Mast - Reactions / Mástil - Reacciones / Torre - Reazioni  
 Tramo - Reações / Реакция опор мачты

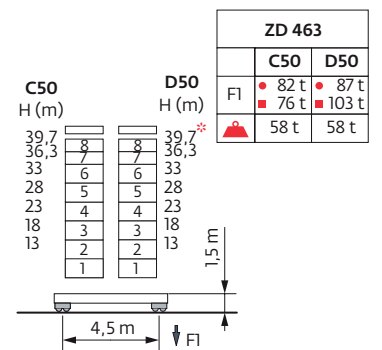
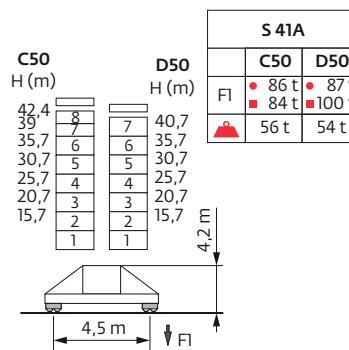
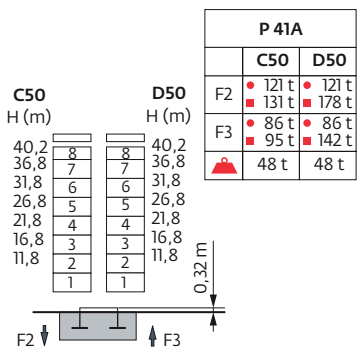
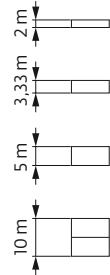
1,6 m City

25 m → 65 m



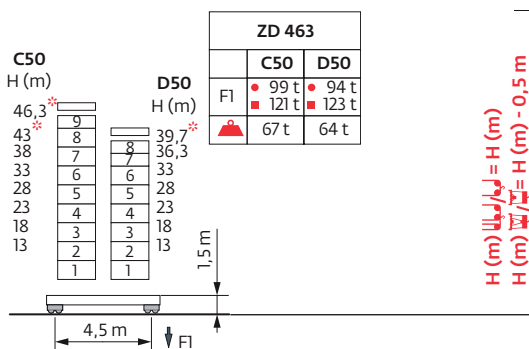
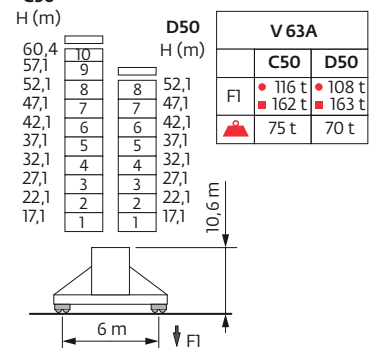
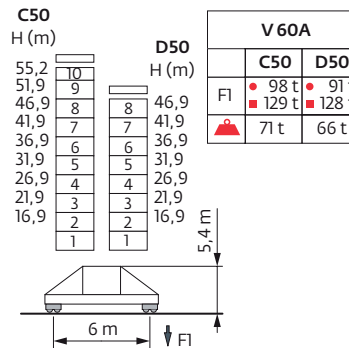
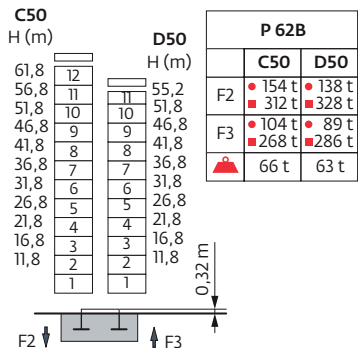
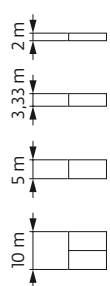
1,6 m

25 m → 65 m



2 m

25 m → 65 m












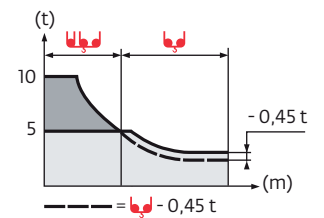
Ancrages / Verankerungen / Anchorages / Anclajes / Ancoraggi  
 Ancoragem / Анкера










C50-D50 

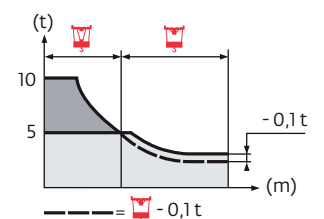
Courbes de charges / Lastkurven / Load curves / Curvas de carga / Curve di carico  
 Curvas de carga / Кривые нагрузок



65 m	3,1	▶	19	20	22	25	27	30	32	34	36,5	37	40	42	45	47	50	52	55	57	60	62	65	m
			10	9,4	8,4	7,3	6,6	5,8	5,4	5	5	4,9	4,5	4,3	3,9	3,7	3,5	3,3	3,1	2,95	2,75	2,65	2,5	t
60 m	3,1	▶		20,3	22	25	27	30	32	35	36,3	39	40	42	45	47	50	52	55	57	60			m
				10	9,1	7,8	7,1	6,3	5,8	5,2	5	5	4,9	4,6	4,2	4	3,7	3,6	3,3	3,2	3			t
55 m	3,1	▶		20,5	22	25	27	30	32	35	36,8	39,5	40	42	45	47	50	52	55					m
				10	9,2	7,9	7,3	6,4	5,9	5,3	5	5	4,9	4,7	4,3	4,1	3,8	3,6	3,4					t
50 m	3,1	▶		21,3	22	25	27	30	32	35	37	38,4	41,2	42	45	47	50							m
				10	9,7	8,3	7,6	6,7	6,2	5,6	5,2	5	5	4,9	4,5	4,3	4							t
45 m	3,1	▶			22,1	25	27	30	32	35	37	39,8	42,6	45										m
					10	8,7	7,9	7	6,5	5,8	5,5	5	5	4,7										t
40 m	3,1	▶			22,5	25	27	30	32	35	37	40												m
					10	8,9	8,1	7,2	6,7	6	5,6	5,1												t
35 m	3,1	▶			21,6	22	25	27	30	32	35													m
					10	9,8	8,5	7,7	6,8	6,3	5,7													t
30 m	3,1	▶				22,2	25	27	30															m
						10	8,7	8	7,05															t
25 m	3,1	▶					22,9	25																m
							10	9,05																t



65 m	2,4	▶	19,5	20	22	25	27	30	32	35	35,6	37	40	42	45	47	50	52	55	57	60	62	65	m
			10	9,7	8,7	7,5	6,8	6	5,6	5	5	4,8	4,3	4,1	3,7	3,5	3,3	3,1	2,9	2,75	2,55	2,45	2,3	t
60 m	2,4	▶		20,4	22	25	27	30	32	35	36,8	37,4	40	42	45	47	50	52	55	57	60			m
				10	9,2	7,9	7,2	6,4	5,9	5,3	5	5	4,6	4,3	4	3,8	3,5	3,3	3,1	2,95	2,75			t
55 m	2,4	▶		20,7	22	25	27	30	32	35	37	37,5	38,2	40	42	45	47	50	52	55				m
				10	9,3	8,1	7,4	6,5	6,1	5,4	5,1	5	5	4,7	4,5	4,1	3,9	3,6	3,4	3,2				t
50 m	2,4	▶		21,6	22	25	27	30	32	35	37	39,1	39,9	40	42	45	47	50						m
				10	9,8	8,5	7,7	6,9	6,4	5,7	5,3	5	5	4,7	4,3	4,1	3,8							t
45 m	2,4	▶			22,3	25	27	30	32	35	37	40	40,5	41,2	42	45								m
					10	8,8	8	7,1	6,6	5,9	5,6	5,1	5	5	4,9	4,5								t
40 m	2,4	▶			22,8	25	27	30	32	35	37	40												m
					10	9	8,2	7,3	6,8	6,1	5,7	5,2												t
35 m	2,4	▶			21,9	22	25	27	30	32	35													m
					10	9,9	8,6	7,9	7	6,4	5,8													t
30 m	2,4	▶				22,3	25	27	30															m
						10	8,8	8	7,1															t
25 m	2,4	▶					23,1	25																m
							10	9,15																t



Lest de base / Grundballast / Base ballast / Lastre de base / Zavorra di base  
 Lastro da base / Базовый Балласт

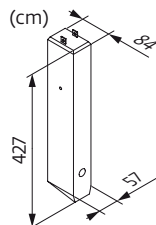
1,6 m City	S 41A C50 D50	H (m)	43,7	42	38,7	33,7	23,7						
			102	96	84	84	84						
			-	114	102	84	84						
	ZD 463 C50 D50	H (m)	41	31	21								
			90	85	85								
			105*	85	85								
1,6 m	S 41A C50 D50	H (m)	42,4	40,7	39	35,7	30,7	25,7	20,7	15,7			
			102	96	90	84	84	84	84	84			
			-	114	108	96	84	84	84	84			
	ZD 463 C50 D50	H (m)	39,7	36,3	33	28	23	18	13				
			90	85	85	85	85	85	85				
			110*	95	85	85	85	85	85				
2 m	V 60A C50 D50	H (m)	55,2	51,9	46,9	41,9	36,9	31,9	26,9	21,9	16,9		
			132	108	72	60	48	36	36	36	36		
			-	-	132	96	60	48	36	36	36		
	V 63A C50 D50	H (m)	60,4	57,1	52,1	47,1	42,1	37,1	32,1	27,1	22,1	17,1	
			180	144	108	84	60	48	36	36	36	36	
			-	-	180	144	108	60	48	36	36	36	
	ZD 463 C50 D50	H (m)	46,3	43	39,7	38	36,3	33	28	23	18	13	
			120*	105*	90	85	85	85	85	85	85	85	
			-	-	125*	105*	95	85	85	85	85	85	

Poids de flèche & lest de contre-flèche / Auslegergewicht & Gegenauslegerballast / Jib weight & counter-jib ballast / Peso de flecha y lastre de contra-flecha / Peso del braccio & zavorra di contro-braccio / Peso da lança & lastro da contra-lança  
 Вес стрелы и балласт контр-стрелы

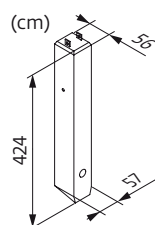
	(kg) (+/- 5%)					
				4600 kg	1530 kg	(kg)
65 m	11375	11095	11435	5	0	23000
60 m	11155	10875	11215	5	0	23000
55 m	10765	10520	10835	4	2	21460
50 m	9870	9625	9940	4	0	18400
45 m	9965	9720	10035	4	0	18400
40 m	9065	8820	9135	3	2	16860
35 m	9100	8855	9170	3	1	15330
30 m	8320	8075	8390	3	0	13800
25 m	8005	7760	8075	3	0	13800

	(kg) (+/- 5%)					
				3070 kg	1530 kg	(kg)
65 m	11375	11095	11435	7	1	23020
60 m	11155	10875	11215	7	1	23020
55 m	10765	10520	10835	7	0	21490
50 m	9870	9625	9940	6	0	18420
45 m	9965	9720	10035	6	0	18420
40 m	9065	8820	9135	5	1	16880
35 m	9100	8855	9170	5	0	15350
30 m	8320	8075	8390	4	1	13810
25 m	8005	7760	8075	4	1	13810

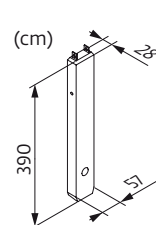
CBS - 4600 kg



CBU - 3070 kg




CBY - 1530 kg


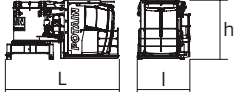
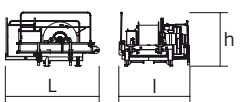


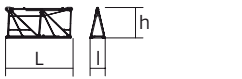
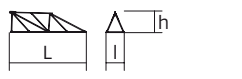
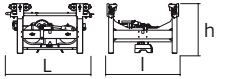
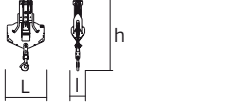
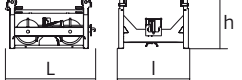
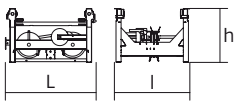
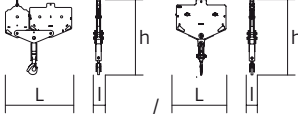


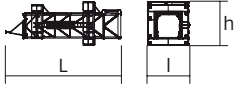
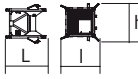

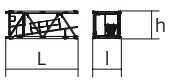

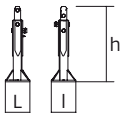
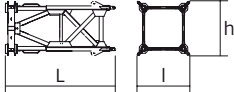
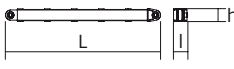
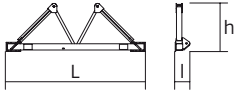

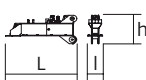
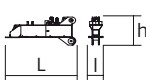
Encombremet et poids / Abmessungen und Gewicht / Dimensions and weight / Dimensiones y peso / Ingombro e peso  
dimensões e pesos / габаритные размеры и вес

Partie tournante / Drehender Kranteil / Slewing crane part / Parte giratoria

Parte rotante / Parte rotativa / Поворотная часть :  65 m -  -  50 LVF



Partie tournante / Drehender Kranteil / Slewing crane part Parte giratoria / Parte rotante / Parte rotativa Поворотная часть		L (m)	l (m)	h (m)	kg (+/- 5%)
Contre-flèche / Gegenausleger Counter-jib / Contra-flecha Controbraccio / Contra-lança Контр-стрела		10,9 10,9	1,27 1,27	2,5 2,5	8280 7865
Pivot + cabine / Krankopf + Kabine Towerhead + cab / Pivote + cabina Portaralla + cabina / Pivot + cabina Секция поворотной части + кабина		4,75 4,9	2,28 2,28	2,52 2,52	7880 8445
Treuil de levage (+ câble) / Hubwerk (+ Seil) Hoisting winch (+ rope) / Mecanismo de elevación (+ cabo) Argano di sollevamento (+ fune) Guincho de elevação (+ cabo) Подъемная лебедка (+ канатом)		3,24 3,24	2,46 2,46	1,88 1,88	3320 4220
Elément de flèche / Auslegerelement Jib section / Elemento de flecha Elemento di braccio / Elemento de lança Секция стрелы		10,76	1,47	2,47	3665
Elément de flèche / Auslegerelement Jib section / Elemento de flecha Elemento di braccio / Elemento de lança Секция стрелы		10,27 10,23 10,22 10,19	1,2 1,2 1,2 1,2	2,41 2,39 2,09 1,83	2245 1325 980 795
Elément de flèche / Auslegerelement Jib section / Elemento de flecha Elemento di braccio / Elemento de lança Секция стрелы		5,26 5,09	1,2 1,2	2,4 1,53	895 310
Elément de flèche / Auslegerelement Jib section / Elemento de flecha Elemento di braccio / Elemento de lança Секция стрелы		5,09	1,2	1,39	220
Chariot / Laufkatze Trolley / Carrello Carro / Carro-distribuidor Тележка		1,87	1,51	1,05	400
Moufle / Hubflasche Pulley block / Aparejo Bozzello / Cadernal Полиспаст		1,02	0,43	2	315
Chariot / Laufkatze Trolley / Carrello Carro / Carro-distribuidor Тележка		1,57	1,51	0,98	210
Chariot / Laufkatze Trolley / Carrello Carro / Carro-distribuidor Тележка		1,7 1,86	1,51 1,51	1,03 0,98	245 294
Moufle / Hubflasche Pulley block / Aparejo Bozzello / Cadernal Полиспаст		1,65 1,09	0,22 0,16	1,71 1,49	325 195

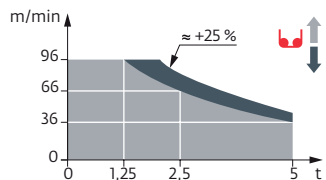
Рулоне / Kranturm / Crane tower Mástil / Torre / Torre Башня крана		L (m)	I (m)	h (m)	kg (+/- 5%)	
Cage de télescopage / Teleskopwagen Telescopic cage / Jaula de telescopaje Gabbia di telescopaggio / Gaiola de telescopagem для телескопирования крана		□1,6 m □2 m	11,2 11,5	3,94 4,21	3,58 4,36	5865 8235
K40/K40 K60/K60		□1,6 m □2 m	2,21 2,24	2,1 2,46	2,06 2,5	1455 1980
K 437B KM 437E KM 439E K 639B		□1,6 m □1,6 m □1,6 m □2 m	10,21 10,21 10,21 10,23	1,67 1,62 1,62 2,07	1,62 1,62 1,62 2,03	3450 3215 3835 5290
K 437A K 439A KR 649A K 639A		□1,6 m □1,6 m □2 m □2 m	5,21 5,21 5,23 5,23	1,67 1,67 2,1 2,07	1,62 1,62 2,08 2,03	1850 2230 3250 2805
K 437C K 639C		□1,6 m □2 m	3,45 3,57	1,67 2,07	1,62 2,03	1360 1985
Pieds de scellement / VerankerungsfüÙe Fixing angles / Pie de empotramiento Montante da annegare / Angulos fixadores анкера		P 41A P 62B	0,37 0,65	0,37 0,65	1,14 1,27	135 295
Mât-châssis / Grundmasteinheit Basic mast unit / Tramo-chassis Elemento base / Tramo-chassis Мачта для крепления к шасси		S 41A V 60A V 63A	3,63 5,01 10,02	1,96 2,41 2,41	2,08 2,41 2,41	2965 4390 7485
Haubans / Mastabstützungen Struts / Tornapuntas Puntoni / Escoras Растяжка		S 41A V 60A V 63A	3,18 4,51 4,51	0,26 0,29 0,33	0,24 0,29 0,33	225 420 515
Sommier / Unterwagenhälfte Half-bearer / Testero Testata / Estrutura base Траверса		S 41A V 60A V 63A	5,08 6,7 6,7	0,6 0,7 0,7	1,78 2,31 2,31	1145 1600 1850
Bras de croix / Fundamentkruzträger Cross girder / Braço en cruz Braccio croce / Braço da cruz Поперечная балка		ZD 463	7,65	1,17	1,36	3585
1/2 Bras de croix / 1/2 Fundamentkruzträger 1/2 Cross girder / 1/2 Braço en cruz 1/2 Braccio croce / 1/2 Braço da cruz 1/2 Поперечная балка		ZD 463	3,41	0,7	1,35	1655
1/2 Bras de croix / 1/2 Fundamentkruzträger 1/2 Cross girder / 1/2 Braço en cruz 1/2 Braccio croce / 1/2 Braço da cruz 1/2 Поперечная балка		ZD 463	3,41	0,73	1,35	1670

Mécanismes / Triebwerke / Mechanisms / Mecanismos / Meccanismi  
 Mecanismos / Механизмы

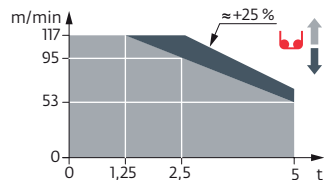
400 V - 50 Hz										ch - PS hp	kW		
	<b>50 LVF 25 Optima</b>	m/min	36	46	66	96	18	23	33	48	50	37	557 m
	t	5	3,75	2,5	1,25	10	7,5	5	2,5				
	<b>75 LVF 25 Optima</b>	m/min	53	68	95	117	26,5	34	47,5	58,5	75	55	895 m
	t	5	3,75	2,5	1,25	10	7,5	5	2,5				
	<b>6 DVF 4</b>	m/min	0 → 50 (10 t) 0 → 100 (5 t) 0 → 120 (2,5 t)								5,5	4	
	<b>RVF 162 Optima+</b>	tr/min U/min rpm	0 → 0,8								2 x 7,5	2 x 5,5	
	<b>S 41A</b> RT 443 A1 - 2V R ≥ 10 m	m/min	15 - 30								4 x 5	4 x 3,7	
	<b>V 60A</b> RT 544 A1 - 2V R ≥ 13 m	m/min	13,5 - 27								4 x 7	4 x 5,2	
	<b>V 63A</b> RT 664 A2B - 2V	m/min	16 - 32								6 x 7	6 x 5,2	
	<b>ZD 463</b> RT 443 A1 - 2V	m/min	15 - 30								4 x 5	4 x 3,7	

IEC 60204-32	
400 V (+10% -10%) 50 Hz	50 LVF : 58 kVA 75 LVF : 78 kVA

50 LVF 25 Optima



75 LVF 25 Optima



	FR	DE	EN	ES	IT	PT	RU
	Profil de vent suivant EN 14439 C50-D50	Windbedingungen gemäss EN 14439 C50-D50	Wind conditions according to EN 14439 C50-D50	Conformidad de los condiciones de viento EN 14439 C50-D50	Condizioni del vento secondo EN 14439 C50-D50	Perfil de vento conforme EN 14439 C50-D50	Ветровой режим в соответствии с EN 14439 C50-D50
	Appel de flèche	Auslegerüberhöhung	Jib elevation	Elevación de la flecha	Inclinazione braccio	Desvio da lança	подъем стрелы
	Équipements standards	Standardausrüstungen	Standard equipment	Equipamiento de serie	Equipaggiamento standard	Equipamento de série	Стандартное оборудование
	Équipements optionnels	Sonderausrüstungen	Options	Equipamiento opcional	Equipaggiamento in opzione	Equipamento opcional	Дополнительное оборудование (опция)
	Réactions en service	Reaktionskräfte in Betrieb	Reactions in service	Reacciones en servicio	Reazioni in servizio	Reacções em serviço	Реакция при работе
	Réactions hors service	Reaktionskräfte außer Betrieb	Reactions out of service	Reacciones fuera de servicio	Reazioni fuori servizio	Reacções fora de serviço	Реакция в покое
	A vide sans lest avec flèche et hauteur maximum	Gewicht ohne Last, ohne Ballast, mit Ausleger und max. Höhe	Weight without load, without ballast, with jib and max. height	Peso en vacío sin lastre, con flecha y altura máxima	Peso a vuoto, senza zavorra, con braccio e altezza máximi.	Peso em vazio sem lastro com lança e altura máxima.	Вес пустого, без балласта, со стрелой, максимальной высоты.
	Poids de flèche	Auslegergewicht	Jib weight	Peso de flecha	Peso del braccio	Peso da lança	вес стрелы
	Poids total du lest	Ballast-Gesamtgewicht	Total ballast weight	Peso total del lastre	Peso totale della zavorra	Peso total do lastro	Общий вес балласта
	Utilisation poste fixe uniquement	Nur stationärer Einsatz	Only static use	Uso sobre puesto fijo unicamente	Utilizzo esclusivamente in postazione fissa	Unicamente para utilização fixa	Использовать только в неподвижном состоянии
	Camion 13,4 m	Lkw 13,4 m	Lorry 13,4 m	Camión 13,4 m	Camion 13,4 m	Camião 13,4 m	Ррузовой автомобиль 13,4 м
	Conteneur High Cube 40', et/ou Flat Rack 20'	Container High Cube 40', und/oder Flat Rack 20'	Container High Cube 40', and/or Flat Rack 20'	Contenedor High Cube 40', y/o Flat Rack 20'	Container High Cube 40', e/o Flat Rack 20'	Contentor High Cube 40', e/ou Flat Rack 20'	40-футовый контейнер повышенной вместимости High Cube. и/или 20-футовая открытая платформа Flat Rack
	Levage	Heben	Hoisting	Elevación	Sollevamento	Elevação	Подъем
	Distribution	Katzfahren	Trolleying	Distribución	Distribuzione	Distribuição	Перемещение по стреле
	Orientation	Schwenken	Slewing	Orientación	Rotazione	Rotação	Поворот
	Translation	Kranfahren	Travelling	Traslación	Traslazione	Translação	Перемещение крана
	Puissance requise	Erforderliche Leistung	Required power	Potencia Necesaria	Potenza richiesta	Potência Necessária	Потребляемая мощность
	Nous consulter	Auf Anfrage	Consult us	Consultarnos	Consultateci	Consultar-nos	Проконсультируйтесь у нас
	Document commercial non contractuel. Pour toute information technique se référer à la notice correspondante.	Unverbindliches Vertriebsdokument. Für technische Informationen, siehe die entsprechenden Anweisungen.	This commercial document is not legally binding. For any technical information, please refer to the corresponding instructions.	Documento commercial no contractual. Para cualquier información técnica, ver la noticia correspondiente.	Documento commerciale non vincolante, per tutte le informazioni tecniche fare riferimento al catalogo istruzioni.	Documento comercial não contratual. Para qualquer informação técnica complementar consultar as respectivas instruções.	Этот коммерческий документ не является юридически обязательным. Для получения технической информации, см. соответствующие инструкции.



Grove Manitowoc National Crane Potain

**Americas**  
**Manitowoc, Wisconsin, USA**  
 Tel: +1 920 684 6621  
 Fax: +1 920 683 6277

**Shady Grove, Pennsylvania, USA**  
 Tel: +1 717 597 8121  
 Fax: +1 717 597 4062

**Europe, Middle East, Africa**  
**Dardilly, France**  
 Tel: +33 (0)4 72 18 20 20  
 Fax: +33 (0)4 72 18 20 00

**China**  
**Shanghai, China**  
 Tel: +86 21 6457 0066  
 Fax: +86 21 6457 4955

**Greater Asia-Pacific**  
**Singapore**  
 Tel: +65 6264 1188  
 Fax: +65 6862 4040

[www.manitowoccranes.com](http://www.manitowoccranes.com)